

124°14'E

124°16'E

124°18'E

124°20'E

124°22'E

124°24'E

LEGEND

- Municipal Boundary
- Barangay Boundary
- Rivers and Creeks
- National Road
- Provincial Road
- Municipal Road
- Barangay Road

Geologic Formation

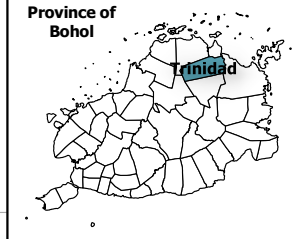
- Alluvium
- Carmen Formation
- Talibon Diorite
- Undifferentiated andesite and basalt lava flows
- Wahig Orbitoid Limestone



Republic of the Philippines
PROVINCE OF BOHOL
City of Tagbilaran



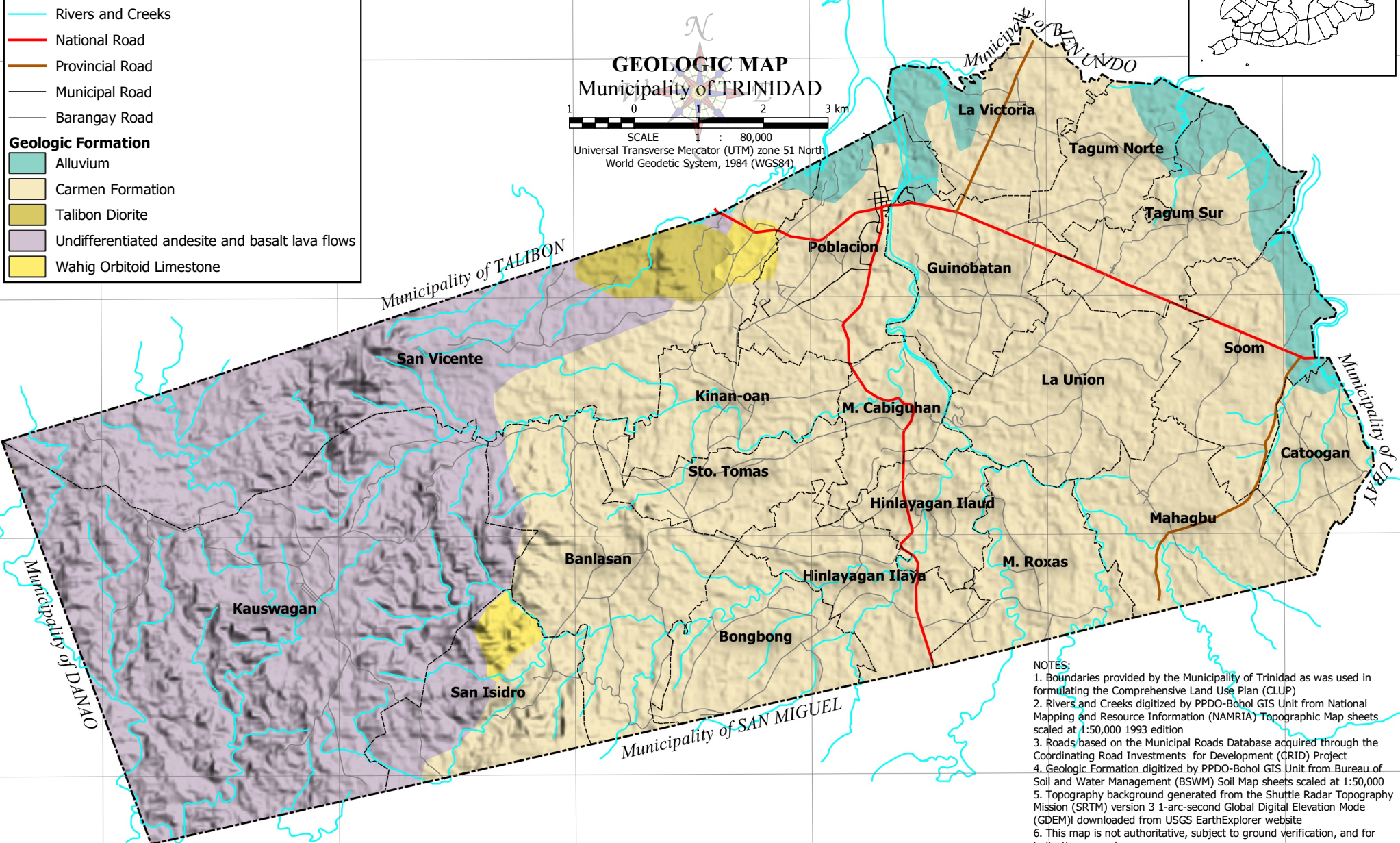
PROVINCIAL PLANNING AND DEVELOPMENT OFFICE



GEOLOGIC MAP Municipality of TRINIDAD



SCALE 1 : 80,000
Universal Transverse Mercator (UTM) zone 51 North
World Geodetic System, 1984 (WGS84)



- NOTES:
1. Boundaries provided by the Municipality of Trinidad as was used in formulating the Comprehensive Land Use Plan (CLUP)
 2. Rivers and Creeks digitized by PPDO-Bohol GIS Unit from National Mapping and Resource Information (NAMRIA) Topographic Map sheets scaled at 1:50,000 1993 edition
 3. Roads based on the Municipal Roads Database acquired through the Coordinating Road Investments for Development (CRID) Project
 4. Geologic Formation digitized by PPDO-Bohol GIS Unit from Bureau of Soil and Water Management (BSWM) Soil Map sheets scaled at 1:50,000
 5. Topography background generated from the Shuttle Radar Topography Mission (SRTM) version 3 1-arc-second Global Digital Elevation Mode (GDEM) downloaded from USGS EarthExplorer website
 6. This map is not authoritative, subject to ground verification, and for indicative use only

124°14'E

124°16'E

124°18'E

124°20'E

124°22'E

124°24'E